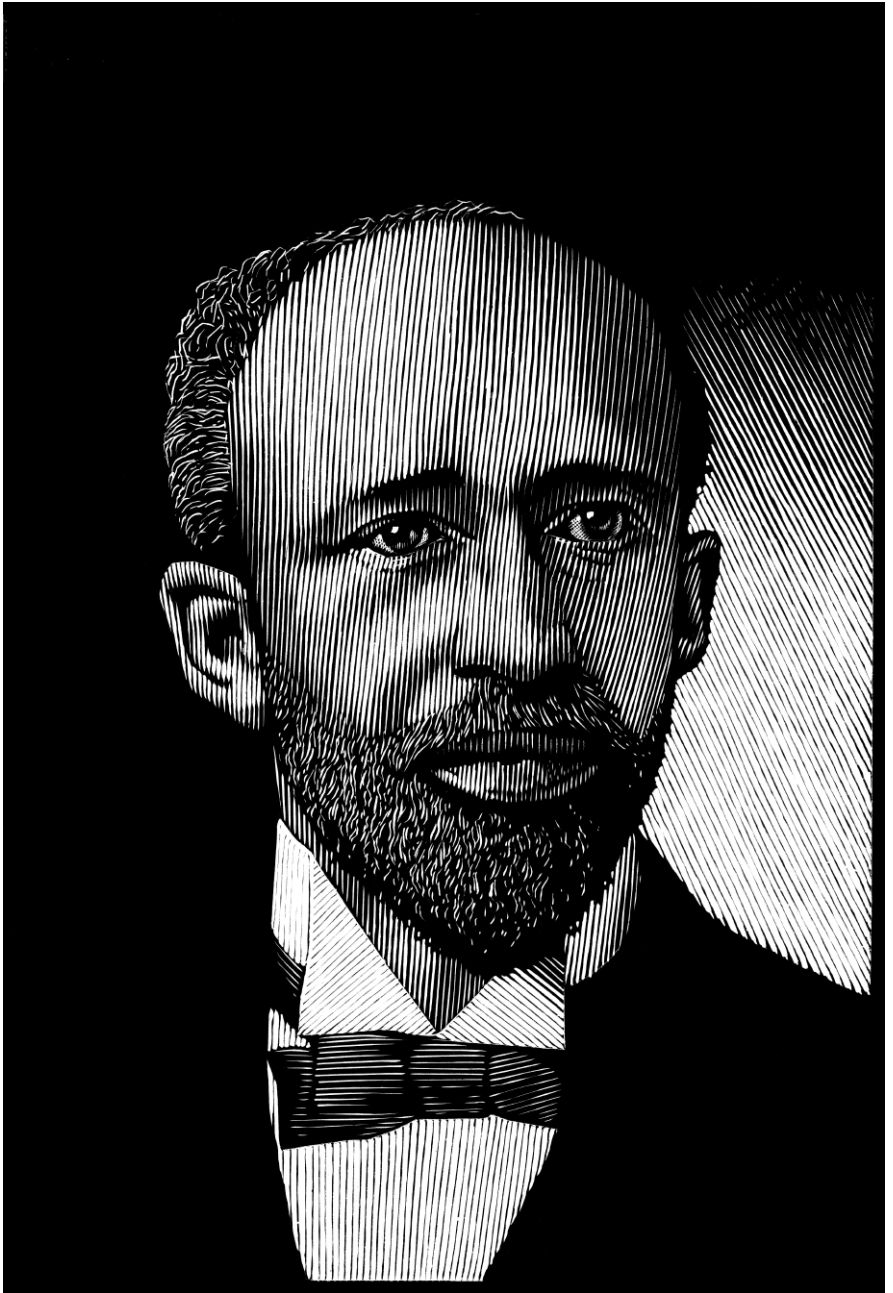


THE MASSACHUSETTS REVIEW



MR

Fiction, Poetry, Essays & Art
since 1959

PORTRAITS

A selection of images of poets and authors by

BARRY MOSER



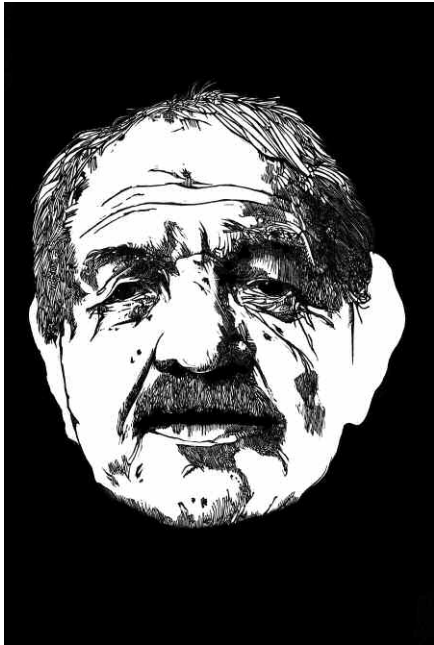
SOJOURNER TRUTH, *Wood Engraving, 2.25 x 3 inches, 2003.*

FRONT COVER:

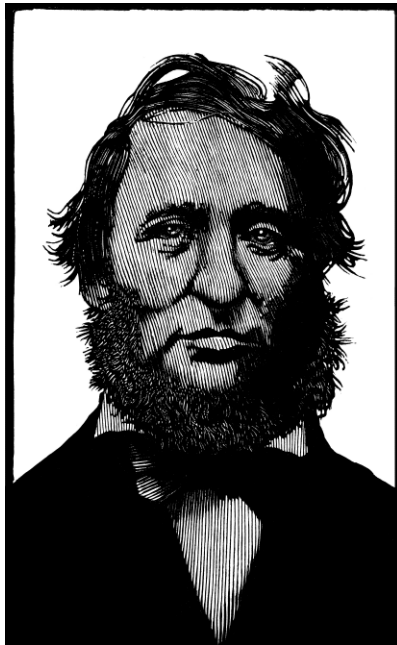
BARRY MOSER, *W. E. Dubois*, 2008

4.25 X 6.25 INCHES

created especially for the Massachusetts Review



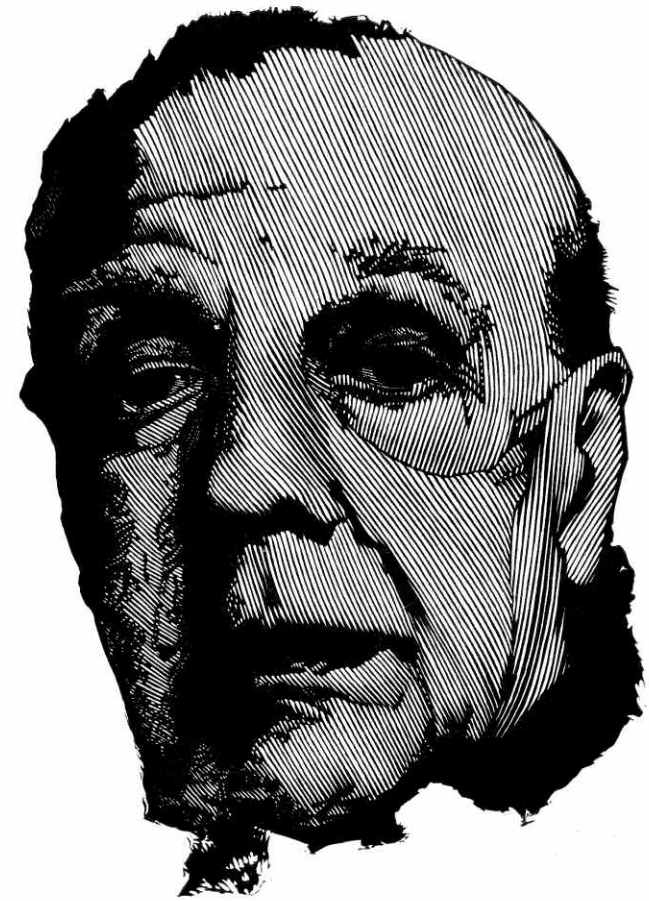
BEN SHAHN
Wood Engraving, 4 x 6 inches, 1973.



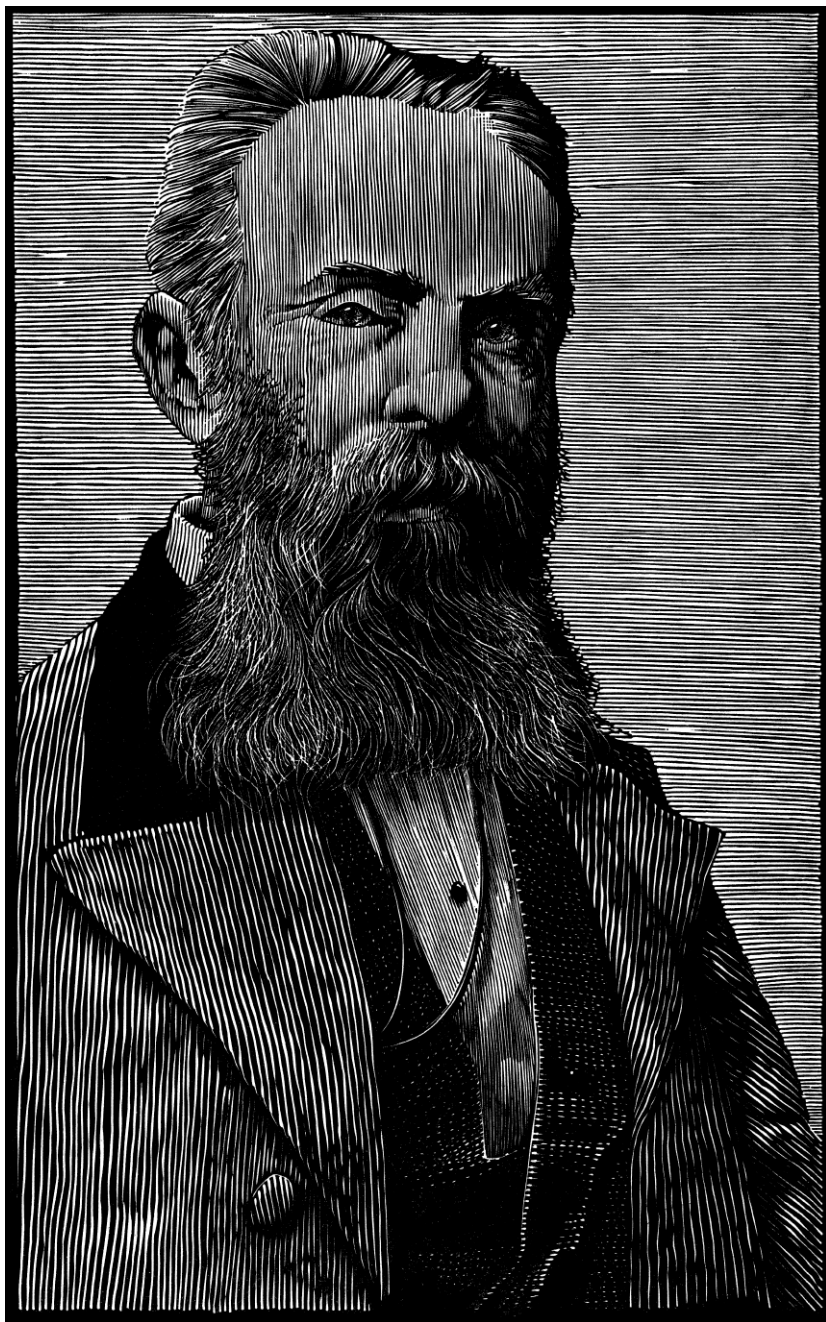
HENRY DAVID THOREAU
Wood Engraving, 3.25 x 6.5 inches, 1986.



PAUL MARIANI
Wood Engraving, 7 x 5 inches, 1999.



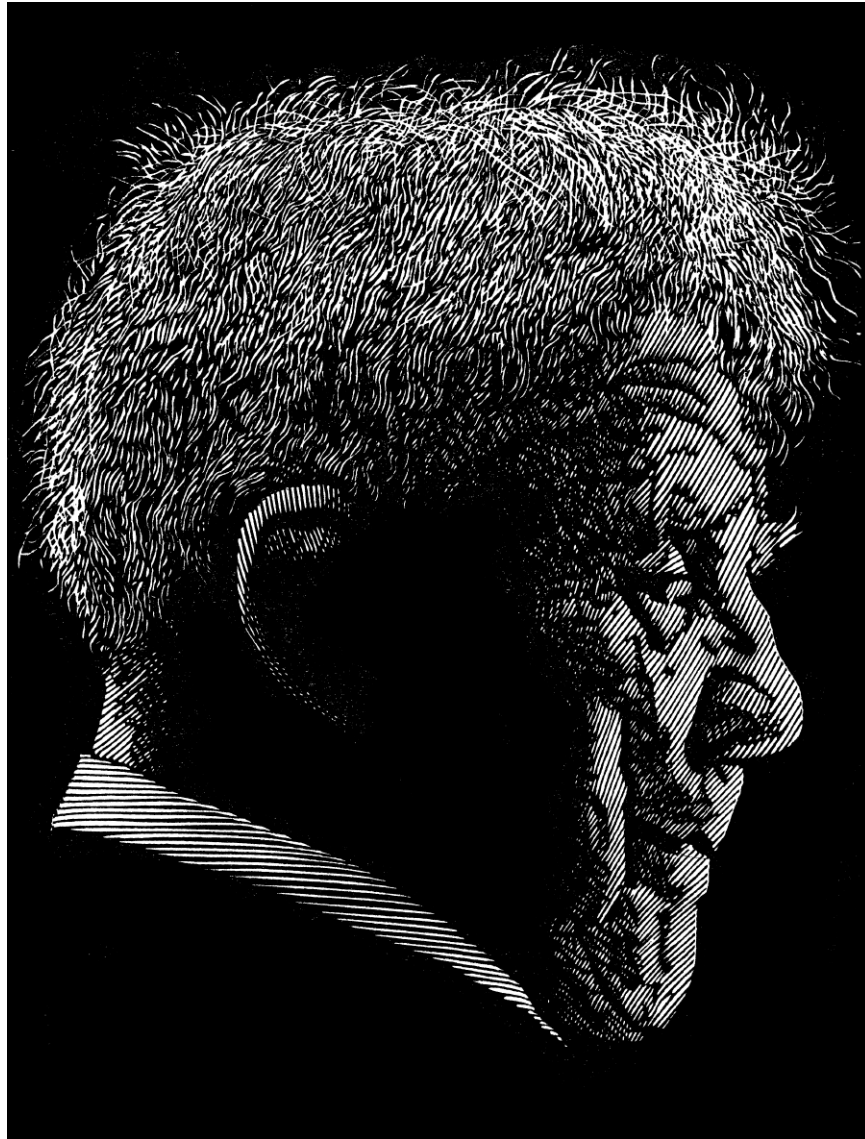
JORGE LUIS BORGES
Relief Engraving, 3.15 x 4.5 inches, 2002.



HERMAN MELVILLE
Relief Engraving, 4.55 x 7.25 inches, 1998.



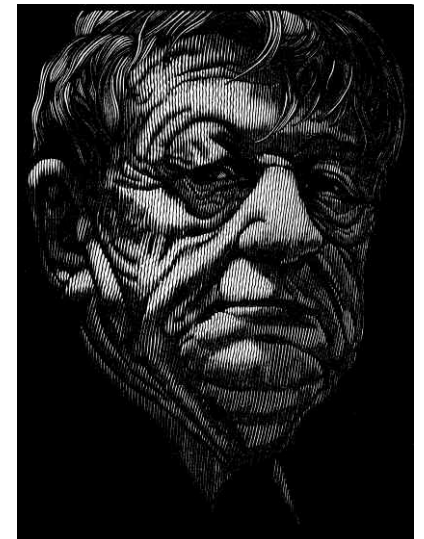
JOYCE CAROL OATES
Relief Engraving, 4 x 5.75 inches, 2003.



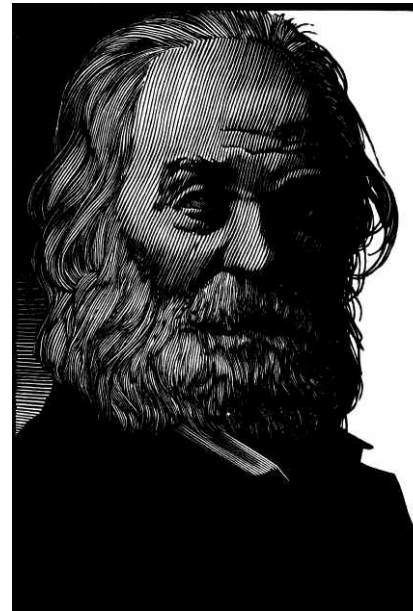
ROBERT FROST
Relief Engraving, 3.5 x 4.5 inches, 2003.



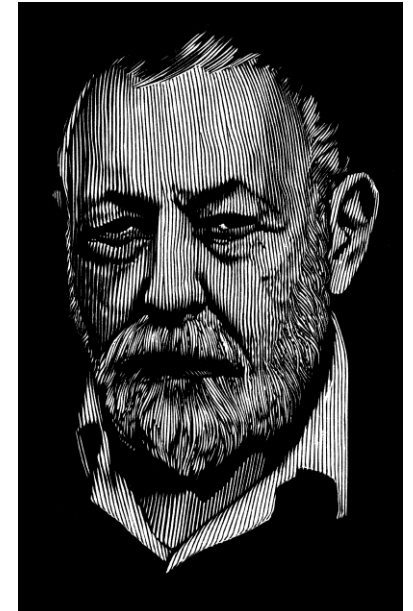
SYLVIA PLATH
Relief Engraving, 3.75 x 5.25 inches, 2004.



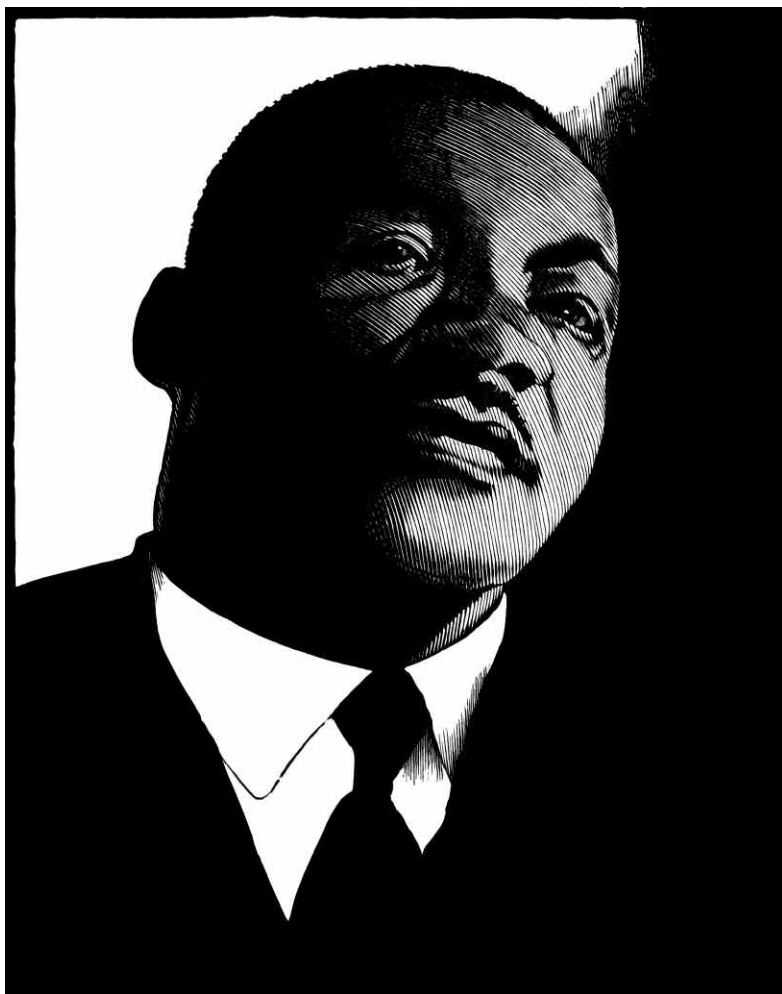
W. H. AUDEN
Relief Engraving, 3.75 x 5.25 inches, 2004.



WALT WHITMAN
Relief Engraving, 3.5 x 5.5 inches, 2003.



LEONARD BASKIN
Relief Engraving, 3 x 5 inches, 2001.



MARTIN LUTHER KING, JR.
Relief Engraving, 6 x 8 inches, 2002.

THE THIRTEEN PERSONS who appear in this special section have either been published by or have been the subject of articles in the *Massachusetts Review*. All of the portraits appeared originally in the Pennyroyal Press publication *Portraits: One Hundred & Sixty-One Portraits of Artists, Architects, Writers, Composers, Friends & Family* that appeared in 2007 with a foreword by Ann Patchett. One hundred of these portraits have been subsequently collected in the forthcoming *Portraits: One Hundred Portraits of Artists, Architects, Writers, Composers, and Friends* to be published by David R. Godine, Publisher, Boston, Massachusetts in the fall of 2008.

MR

THE MASSACHUSETTS REVIEW
AUTUMN 2008

PRINTED BY THE STUDLEY PRESS, DALTON, MASSACHUSETTS